

**POWNALL GREEN PRIMARY SCHOOL**

*LOVE LEARNING, LOVE LIFE!*

**CURRICULUM  
MEETING  
2023**



# How well do our children do?

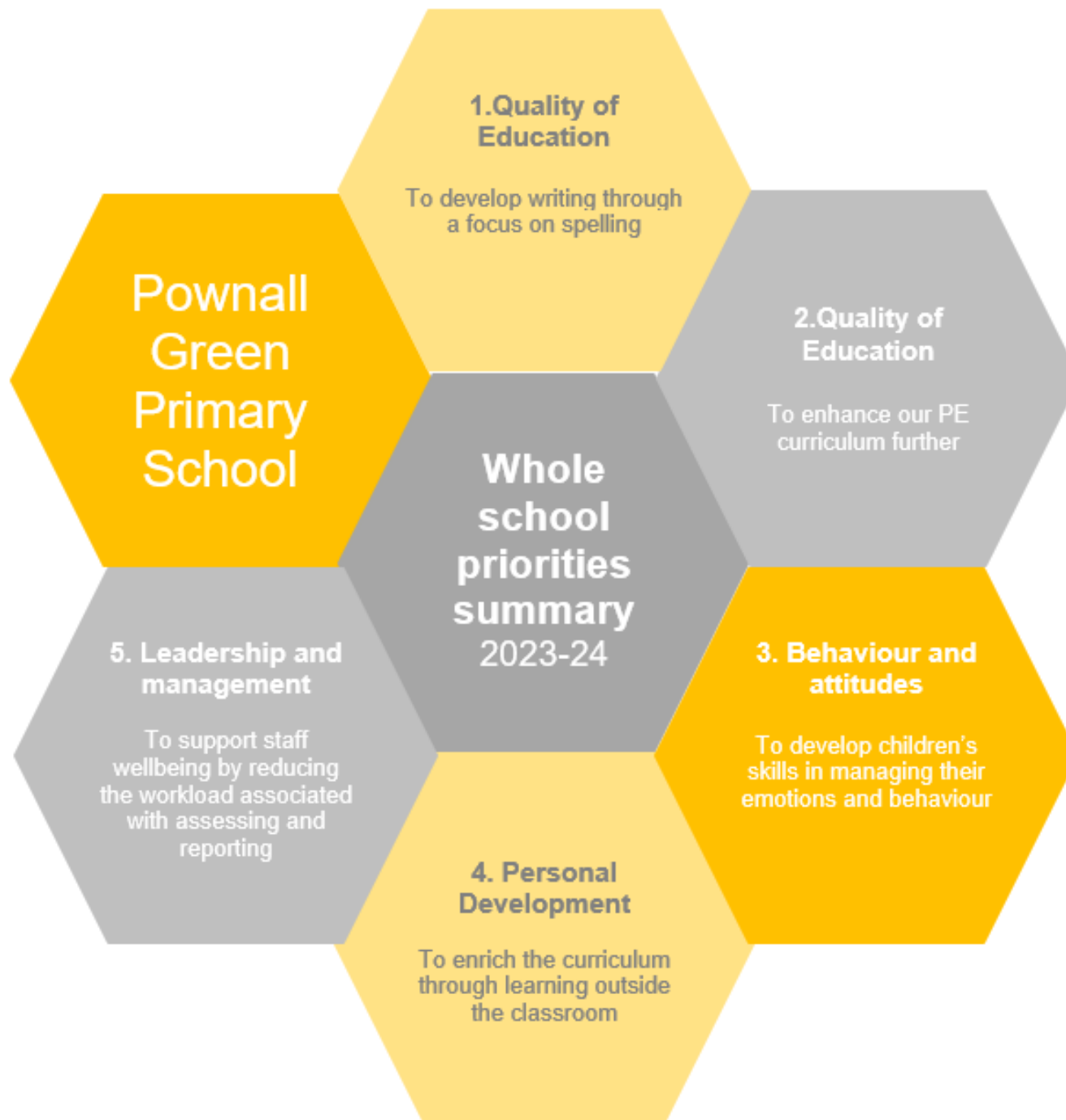
<b>KS2 Data July 2023</b>	<b>School Expected Standard</b>	<b>National Expected Standard</b>	<b>School Greater depth</b>	<b>National Greater depth</b>
<b>Reading</b>	86.9%	72.5%	45.9%	28.9%
<b>Writing</b>	75.4%	71.4%	21.3%	13.3%
<b>Maths</b>	91.8%	72.8%	42.6%	23.7%



# How well do our children do?

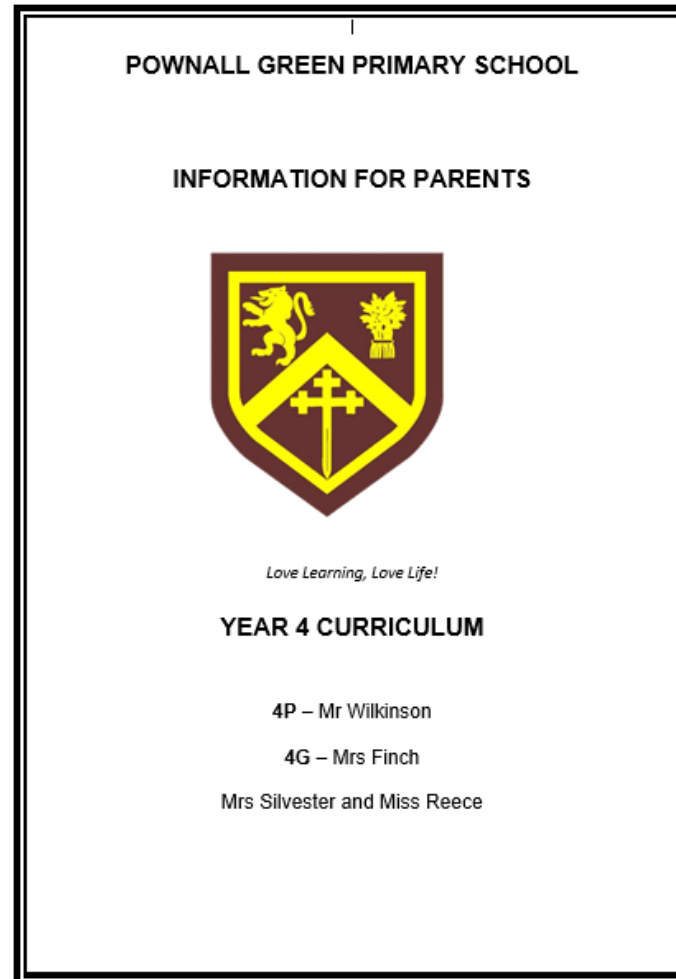








# How will I know what my child will learn this year?





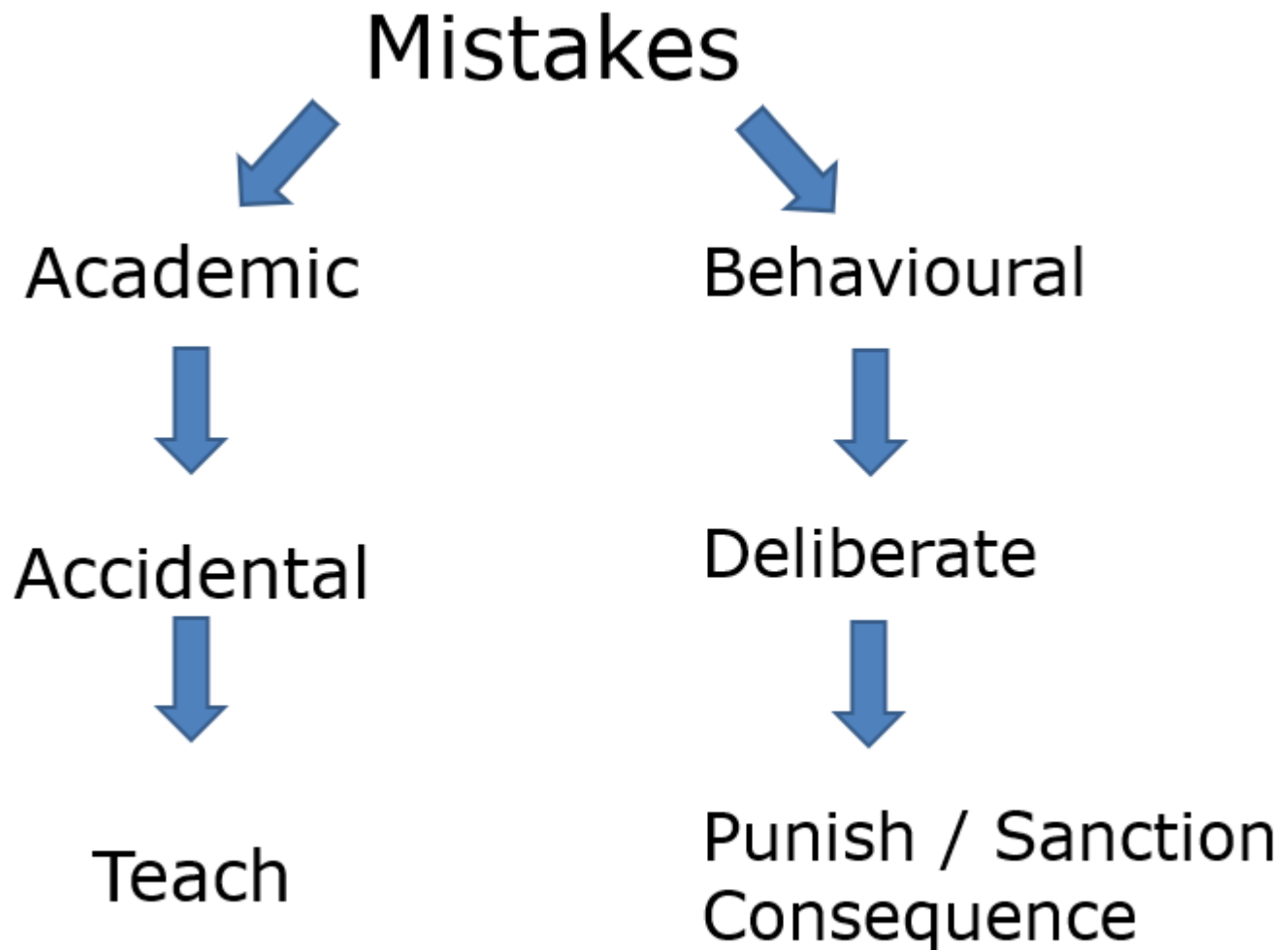
# How will I know how my child is doing this year?

Term 1A	Term 1B	Term 2A	Term 2B	Term 3A	Term 3B
<b>Curriculum Meetings</b> Share what the children are going to learn.	<b>Online Parents Evening</b> How they have settled.  Strengths and development points.  Parents/carers share relevant information.  <b>Open Morning</b> Children will share with parents/carers their learning.	<b>Mid - Year Report</b> Current academic performance  Attendance  Attitude  Targets	<b>Open Morning</b> Children will share with parents/carers their learning.	<b>Face to face Parents Evening</b> How they have progressed.  Strengths and development points.  Parents/carers share relevant information.	<b>End of year report</b> Achievement in all subjects.  Personal and social comments.  Targets for the next year.  <b>Open Morning</b> Children will share with parents/carers their learning.

Google Classroom, curriculum booklets (hard copy and on the website), weekly newsletters, open door policy.



# How does the school make sure children are well behaved?





# How does the school make sure children are well behaved?

## Key principles

- Unconditional positive regard
- Relationships come first
- Behaviour is a form of communication
- Promote a positive approach
- Children need predictable routines, expectations and responses to behaviour
- 'Authoritative' rather than 'Authoritarian' approach.
- Adults are the role models for behaviour
- Consequences should not shame children
- Effective home- school partnerships
- A whole school approach



# How does the school make sure children are well behaved?

- High expectations
- Golden Values
- British Values
- Rewards
- Consequences linked to Golden Values e.g. disrupting learning would result in children practising maintaining their focus without disrupting others during their lunch break
- Uniform
- Individual behaviour plans supported by other services
- Incidents recorded CPOMS- patterns/ areas of concern. Discussed with governors.
- Updated behaviour policy found on the website



# What does the school do to tackle bullying?

- Education through the PSHE programme, assemblies and Anti-Bullying Week on how to build and maintain healthy relationships.
- Diversity is celebrated across the school through diverse displays, books and images.
- The school values of equality and respect are embedded across the curriculum to ensure that it is as inclusive as possible.
- Restorative Approaches provide support for the harmed and harmer plus any other affected parties involved in any bullying incident.
- Parents are informed and included in any actions plans as a result of bullying.
- Restorative buddies offer support to all pupils, including those who may have been the target of bullying.
- Pupils are continually involved in developing school-wide anti-bullying initiatives through consultation with the school council



# What if I'm worried about something at school?

Communication is key to our home-school partnership.

Communication to parents from school will be via:

- Weekly newsletters emailed on a Friday
- Emails as and when required.
- Text messages will be used for emergency communication such as snow days and school closures

Please communicate with us via email on the addresses below. We will endeavour to reply as soon as we can within 3 days.

To contact the school office please email [admin@pownallgreen.co.uk](mailto:admin@pownallgreen.co.uk)

To contact the Headteacher please use [Headteacher@pownallgreen.co.uk](mailto:Headteacher@pownallgreen.co.uk)

For immediate enquiries please telephone the office.



# Attendance



- We seek for a partnership with families to promote a positive attitude to this. However, if your child is unwell, the best place for him/her is home.
- Parents are requested to inform school at the earliest opportunity of the reason for their child's absence.
- Attendance at school is vital for the education of your children. Please arrange appointments outside school wherever possible. Where attendance is not possible due to a requirement to isolate, remote education will be available to support your child's learning.
- Parents are requested to avoid term time holidays in order to cause as little disruption as possible to their child's education. Only in exceptional circumstances may permission be granted for absence during term time.
- Please note that the advice from the Control of Infection Unit is that a child should remain absent from school for 48 hours after vomiting or diarrhoea.

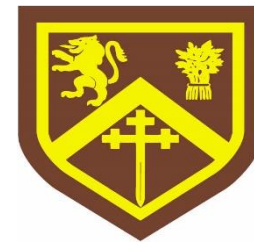


# E-SAFETY





# Inclusion



If you feel your child has additional needs in relation to any of the following, please get in touch with your child's class teacher in the first instance:

- English as an Additional Language
- Emotional wellbeing
- Medical Needs
- Special Educational Needs

The teacher may discuss your concerns with our Inclusion Coordinator, Nina Nikolaides, and arrange a meeting with you. You can also contact Ms Nikolaides directly via the school office or by email: [inclusion@pownallgreen.co.uk](mailto:inclusion@pownallgreen.co.uk).

Ms Nikolaides is also our Pupil Premium Champion. A child is eligible for Pupil Premium if any of the following apply:

- ✓ They are eligible for Free School Meals (for financial reasons, not the Universal Free School Meals which all pupils in Reception to Year 2 are entitled to), or have been in the last 6 years; to check eligibility ~ <https://www.gov.uk/apply-free-school-meals>
- ✓ They are a Child In Care (aka Looked After Child), or have been in the last 6 years
- ✓ They are adopted or subject to a Special Guardianship Order
- ✓ They have parents / carers in military service

If any of the above applies to your child and we do not know, please get in touch.





## Cognition & Learning

### Possible indicators

Difficulty acquiring new skills  
Difficulty retaining knowledge  
Dyslexic type difficulties  
Dyscalculic type difficulties  
Attainment below age-related expectations  
Working Memory difficulties  
Difficulty applying learning in different contexts







**EQUALITY**



**EQUITY**



# Governors

There are currently 12 members on the Pownall Green School Governing Body which comprises 4 elected Parent Governors, 1 elected Staff Governor, 5 co-opted Community Governors, 1 LA Governor and 1 Headteacher Governor (ex officio). Each member of the Governing Body serves for a four year term of office.

<https://pownallgreen.co.uk/overview-of-the-governing-board>





# Parent Teacher Association

## We need you!

**YOUR TIME . YOUR SUGGESTIONS .  
YOUR SKILLS . YOUR ENTHUSIASM . YOUR HELP**

With your support the PTA raises over £20,000 every year for our school

**Why not come along to the next meeting on 4<sup>th</sup> October to  
find out more?**

**Look out in the newsletter for more details.**







**Thank you!**